

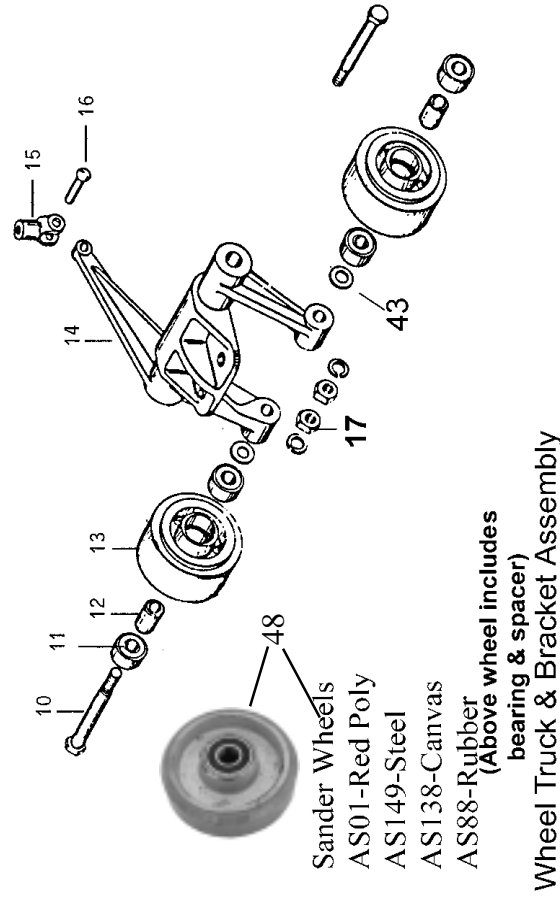
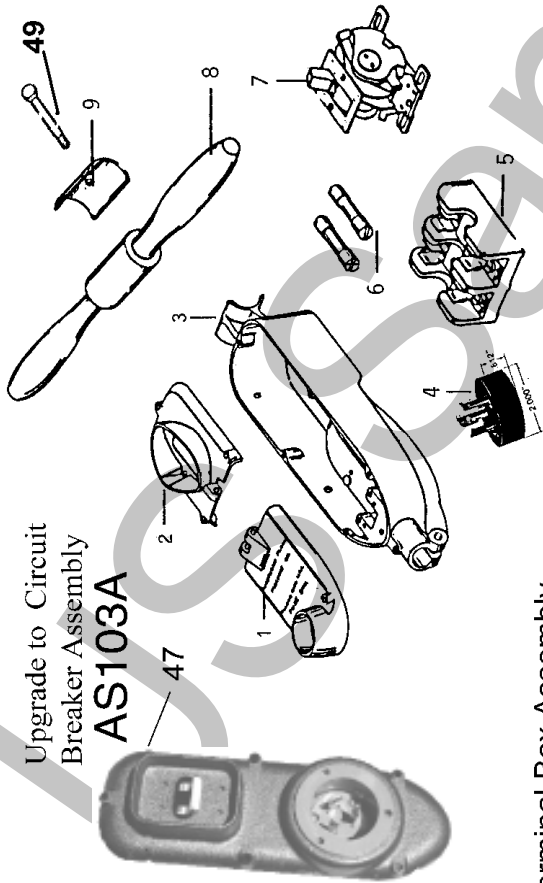
SUPER 8 & 83

ILL. #	PART #	Description
1	AS12	Carry Handle
2	AS46	Clip & Screw
3	AS45	Front Bumper
4	AS02	Drum Cover
5	AS03	Shaft
6	AS69	Rt Wheel Cover
7	AS27	Motor Screw
8	AS101A8	5 HP Kit Baldor
9	*****	
10	*****	
11	K280	110/220 Switc
12	AS62	Cable Arm
13	AS13	Motor Pulley
14	AS11	Dust Support
15	AS60	Dust Pipe
16	AS61	Dust Pipe Elbow
17	AS89	Control Rod
18	AS09	Fork Pin
19	AS08	Rod Fork
20	AS07	Spring
21	AS06	Stop Pin
22	AS05	Control Handle
23	AS30	Quadrant
24	!!	See Next Page
25	AS04	Handle Pipe
26	AS71	Bracket
27	AS21	Pivot Rod
28	AS70	Knob
29	AS72	Pressure Screw
30	AS36	Pressure Spring
31	AS65	Gasket
32	AS100	Main Frame
33	AS66	Cover
34	AS67	Cover Gasket
35	AS26	Drum Screw
36	6303	Bearing
37	AS51	Bearing Cup
38	AS18	Drum Spacer
39	AS15	Drum Shaft
40	AS31	Drum (A8)
41	AS51	Bearing Cup
42	AS19	Drum Spacer

ILL. #	PART #	Description
43	AS148	Spacer Bearing
44	6303	Bearing
45	AS48	Felt Retainer
46	AS38	Felt Washer
47	AS49	Bearing Retainer
48	AS14	Drum Pulley
49	AS79	Plunger Screw
50	AS80	Plunger
51	AS55	Plunger Spring
52	AS68	Wheel Cover
53	AS42	Belt Guard Clip
54	AS90	Control Shaft
55	!!	See Next Page
56	!!	See Next Page
57	AS34	Side Cover Clip
58	AS91	Eccentric
59	AS34	Side Cover Clip
60	AS92	Panlock Ring
61	AS93	Panlock Screw
62	AS94	Panlock Nut
63	AS32	Dust Pan
64	AS43	Gasket
65	AS950S	Orig Alum Guard
66	S25	Motor Brushes
67	S21A	Sander Bag
68	AS102	Nut
69	AS152	Washer
70	AS153	Screw
71	AS156	Spring
72	AS191	Brush Cover
73	AS154	8" Template
73	AS154A	Adj. Template
74	S30	Motor Spring
75	AS184	Key Set
76	AS29	Paper Clamp
77	AS169	8" Feather Kit
78	5L390	Belt
79	4L340	Belt
80	S37	Dust Seal Band
81	K600	HD Switch

Note: Prices may vary from actual cost due to computer rounding or typographical errors. Prices may vary at any time.

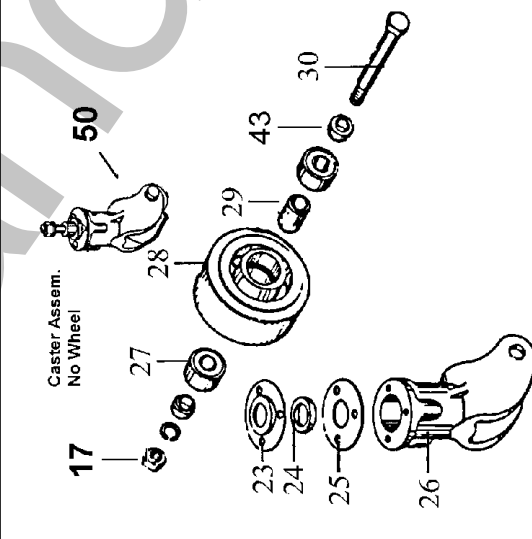
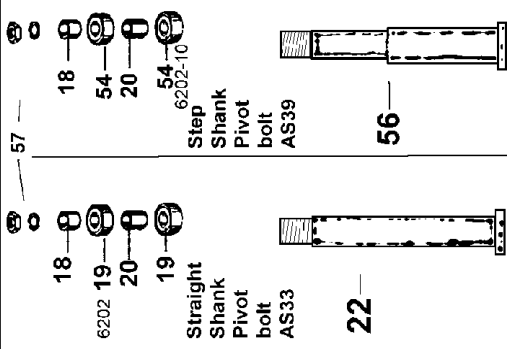
Upgrade to Circuit Breaker Assembly
AS103A



Sander Wheels
AS01-Red Poly
AS149-Steel
AS138-Canvas
AS88-Rubber
(Above wheel includes bearing & spacer)

Wheel Truck & Bracket Assembly

Terminal Box Assembly



Caster Assem.
No Wheel

Rear Caster Assembly

Fan Assembly

Order bolt to fit your bearings or order bolt and bearings. Either bolt will then fit your machine

SUPER 8 & 83

ILL. #	PART #	Description
1	*****	
2	*****	
3	AS82	Switch Box
4	7101NM	Modified Plug
5	K100	Fuse Block
5	K101	Porc. Fuse Block
6	NON30	Fuses NON 30 AM
7	K281	60 Amp. Switch
8	AS35	Handle
9	AS81	Handle Clamp
10	AS17	Wheel Axle
11	6202	Bearing
12	AS83	Spacer
13	AS01	Red Wheel
14	AS99	Wheel Truck
15	AS08	Rod Fork
16	AS09	Fork Pin
17	AS28	Nut & Washer
18	AS54	Spacer, Wheel
19	6202	Bearing
20	AS84	Spacer
22	AS33	Stght Pivot Bolt
23	AS85	Retainer
24	AS63	Felt Washer
25	AS86	Bearing Retainer
26	AS87	Caster Yoke
27	6202	Bearing
28	AS01	Red Wheel
29	AS83	Spacer

ILL. #	PART #	Description
30	AS17	Wheel Axle
31	AS64	Idler Stud
32	AS52	Idler Arm
33	AS56	Idler Sleeve Assy.
34	AS57	Fan
35	AS59	Fan Shaft Collar
36	AS40	Fan Seal
37	AS44	Gasket
38	AS58	Fan Plate
39	6202	Bearing
40	AS23	Fan Shaft
41	6302	Bearing
42	AS96	Retainer
43	AS157	Wheel Spacer
44	AS98	Felt Retainer
45	AS24	4L Fan Pulley
46	AS157	Wheel Spacer
47	AS103A	Ckt Brkr update
48	AS01	Red Wheel
48	AS149	Steel Wheel
48	AS138	Canvas Wheel
49	85818A	Handle Bolt
50	AS87A	Caster No wheel
51	AS192	Spacer Washer
54	6202-10	Bearing
56	AS39	Step Pivot Bolt
57	AS201	Nut - washer

Note: Prices may vary from actual cost due to computer rounding or typographical errors. Prices may vary at any time.