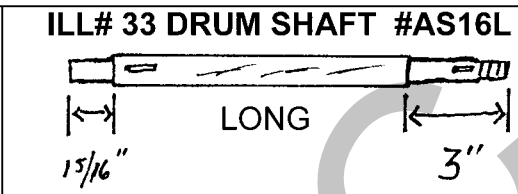
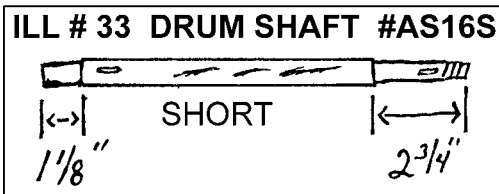
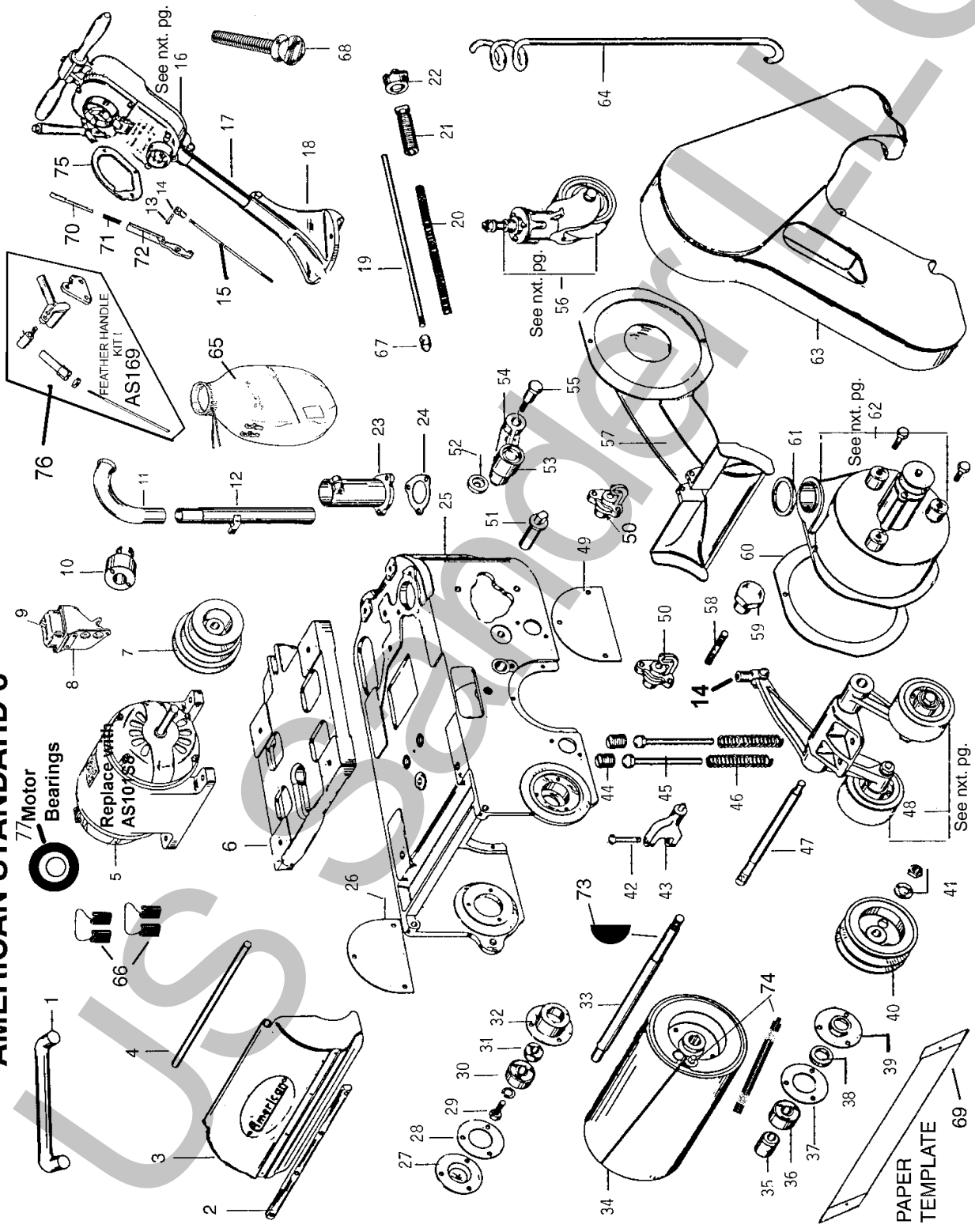


**AMERICAN STANDARD 8**



**AMERICAN STANDARD 8**



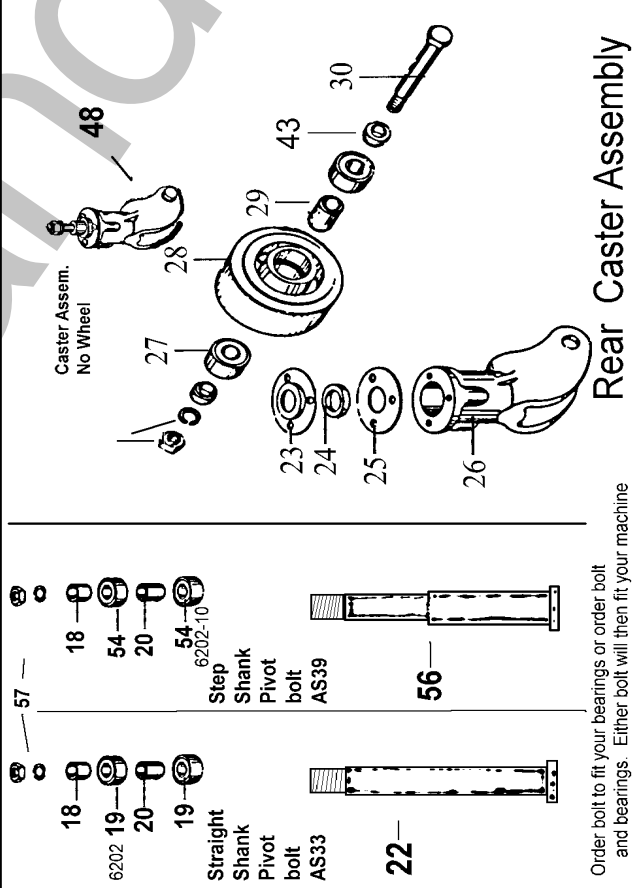
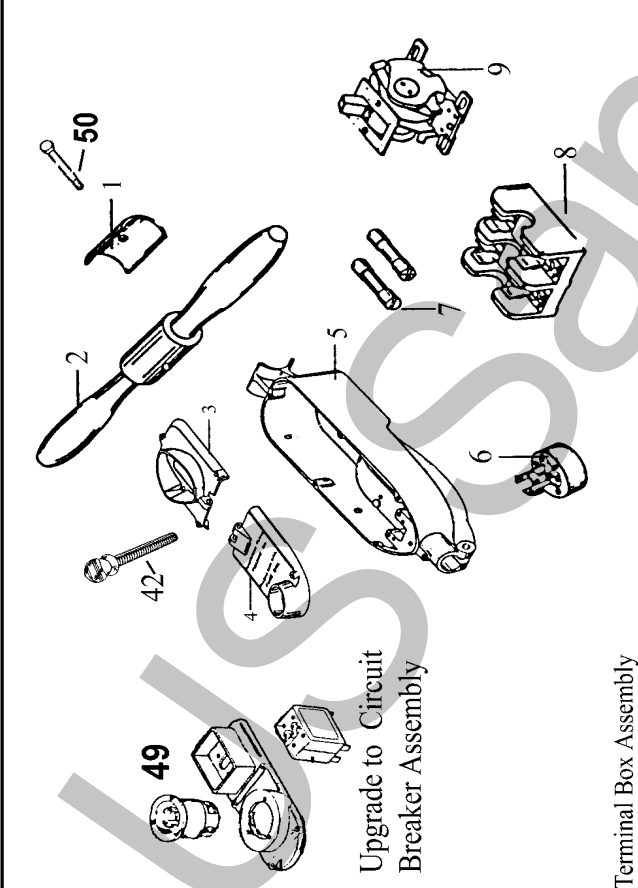
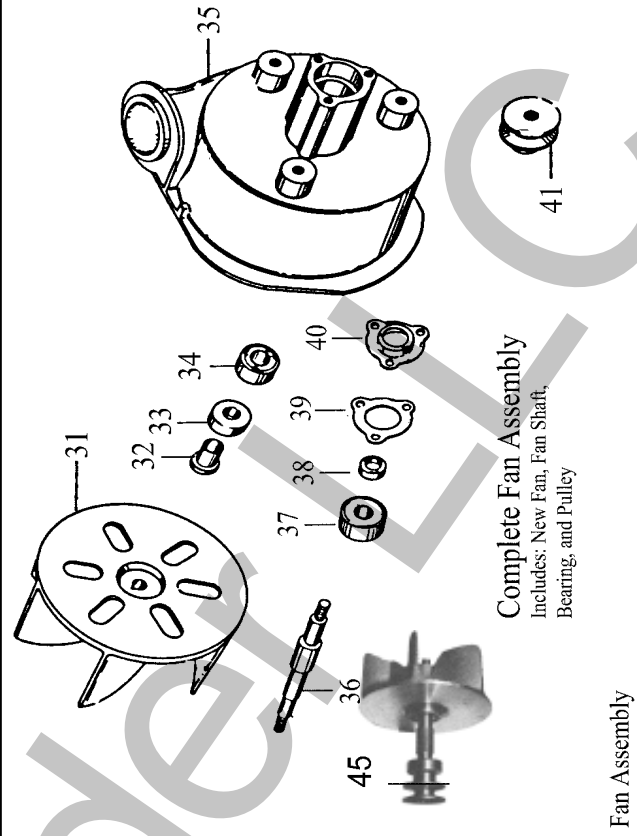
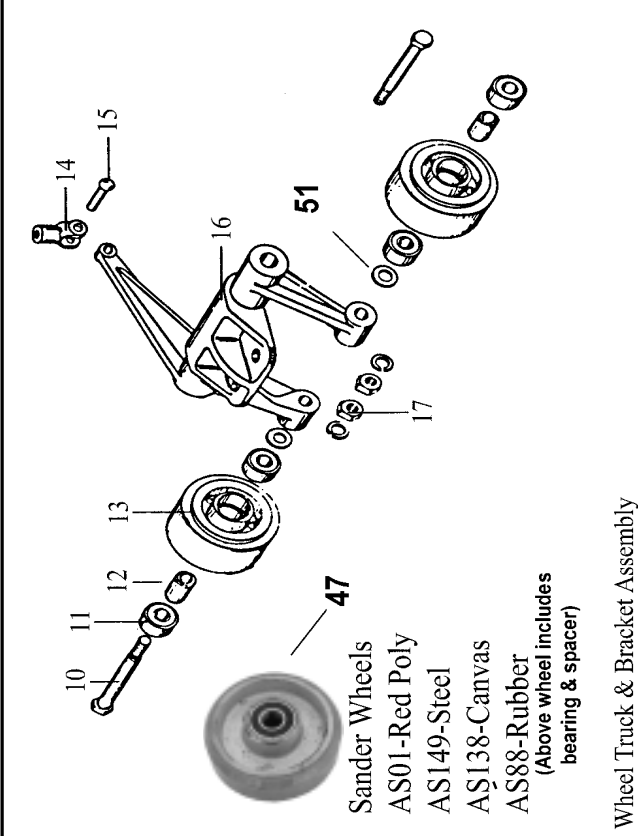
**AMERICAN STANDARD 8**

# AMERICAN STANDARD 8

ILL. #	PART #	Description
1	AS12	Carry Handle
2	*****	
3	AS02M	Std8 Drum cover
4	AS177	Cover Shaft
5	AS101SD	4 HP Kit Baldor
7	AS250	Pulley
8	*****	
9	K280	110/220 Switch
10	7102NM	Male Plug
11	*****	
12	*****	
13	AS09	Fork Pin
14	AS08	Rod Fork
15	AS89	Control Rod
17	AS04	Handle Pipe
18	AS71	Bracket
19	AS21	Pivot Rod
20	AS36	Pressure Spring
21	AS72	Pressure Screw
22	AS70	Knob
23	AS10	2"Support
24	AS173	Gasket
25	*****	
26	AS69	Rt Wheel Cover
27	AS66	Cover
28	AS67	Cover Gasket
29	AS47	Drum Screw
30	6303	Bearing
31	AS139	Drum Spacer
32	AS51	Bearing Cup
33	AS16S	Short Shaft
33	AS16L	Long Shaft
34	AS31	Drum (A8)
35	AS134	Shaft Spacer
36	6303	Bearing
37	AS48	Felt Retainer
38	AS38	Felt Washer
39	AS49	Bearing Retainer

ILL. #	PART #	Description
40	AS150	Drum Pulley 2B
41	AS78	Nut & Washer
42	AS195	Pin Yoke
43	AS117	Yoke Assy.
44	AS79	Plunger Screw
45	AS80	Plunger
46	AS55	Plunger Spring
47	AS90	Control Shaft
49	AS69	Rt Wheel Cover
50	AS120	Clamp Assy.
51	AS91	Eccentric
52	AS122	Spacer
53	AS56	Idler Sleeve Assy.
54	AS52S	Idler Arm Std8
55	AS124	Idler Stud
56	AS87	Caster Yoke
57	*****	
58	AS142	Stud
59	AS141	Knob
60	AS176	Pan Gasket
61	AS175	Felt Gasket
63	AS193	Belt Guard
64	AS62	Cable Arm
65	S21A	Sander Bag
66	S25	Motor Brushes
67	AS102	Nut
68	AS172	Thumb Screw
69	AS154	8" Template
69	AS154A	Adj. Template
70	AS06	Stop Pin
71	AS07	Spring
72	AS05	Control Handle
73	AS184	Key Set
74	AS29	Paper Clamp
75	AS30	Quadrant
76	AS169	8" Feather Kit
77	6205	Bearing

Note: Prices may vary from actual cost due to computer rounding or typographical errors. Prices may vary at any time.



- 18 — 18 — 18 — 18 — 18 —
- 6202 19 — 19 — 19 — 19 — 19 —
- 54 — 54 — 54 — 54 — 54 —
- 20 — 20 — 20 — 20 — 20 —
- 54 — 6202-10
- Step Shank
- Pivot bolt AS39
- 22 —
- 56 —

# AMERICAN STANDARD 8

ILL. #	PART #	Description
1	AS81	Handle Clamp
2	AS35	Handle
3	*****	
4	*****	
5	AS82	Switch Box
6	7102NM	Male Plug
7	NON30	fuses NON 30 AM
8	K100	Fuse Block
8	K101	Porc. Fuse Block
9	K281	60 Amp. Switch
10	AS17	Wheel Axle
11	6202	Bearing
12	AS83	Spacer
13	AS01	Red Wheel
14	AS08	Rod Fork
15	AS09	Fork Pin
16	*****	
17	AS28	Nut & Washer
18	AS54	Spacer, Wheel
19	6202	Bearing
20	AS84	Spacer
22	AS33	Stght Pivot Bolt
23	AS85	Retainer
24	AS63	Felt Washer
25	AS86	Bearing Retainer
26	AS87	Caster Yoke
27	6202	Bearing
28	AS01	Red Wheel
29	AS83	Spacer

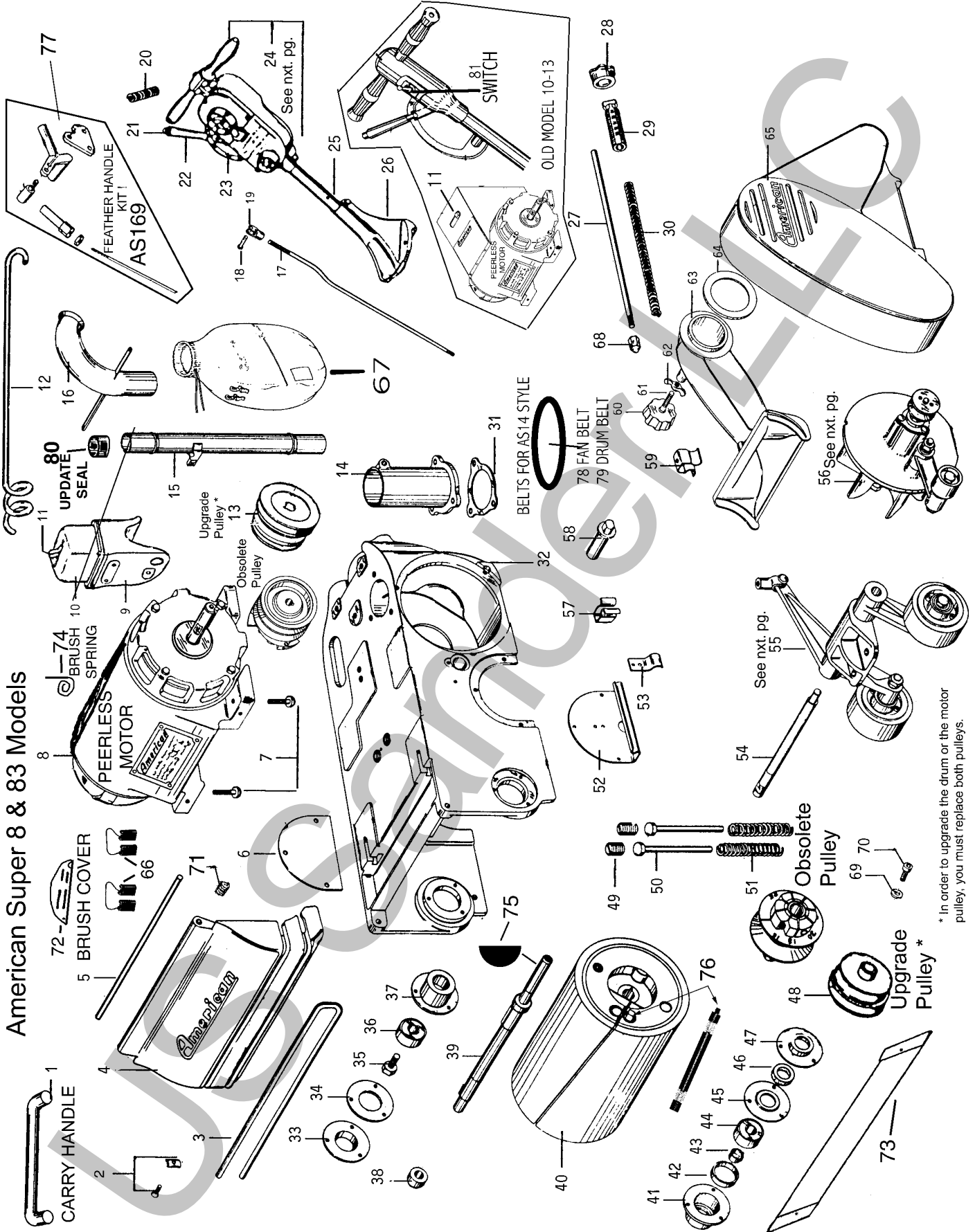
ILL. #	PART #	Description
30	AS17	Wheel Axle
31	AS57STD	Fan Assem
32	AS59	Fan Shaft Collar
33	CS27	Fan Seal
34	6202	Bearing
35	*****	
36	AS22	Fan Shaft
37	6302	Bearing
38	AS97	Felt Washer
39	AS96	Retainer
40	AS98	Felt Retainer
41	AS24	4L Fan Pulley
42	AS172	Thumb Screw
43	AS157	Wheel Spacer
44	AS103A	Ckt Brkr update
45	AS57STD	Fan Assem
47	AS01	Red Wheel
47	AS149	Steel Wheel
47	AS138	Canvas Wheel
48	AS87A	Caster No wheel
49	AS103A	Ckt Brkr update
50	85818A	Handle Bolt
51	AS192	Spacer Washer
54	6202-10	Bearing
56	AS39	Step Pivot Bolt
57	AS201	Nut - washer



## Operator Belts Page 108

Note: Prices may vary from actual cost due to computer rounding or typographical errors. Prices may vary at any time.

# AMERICAN SUPER 8 & 83 MODELS



American Super 8 & 83 Models

\* In order to upgrade the drum or the motor pulley, you must replace both pulleys.