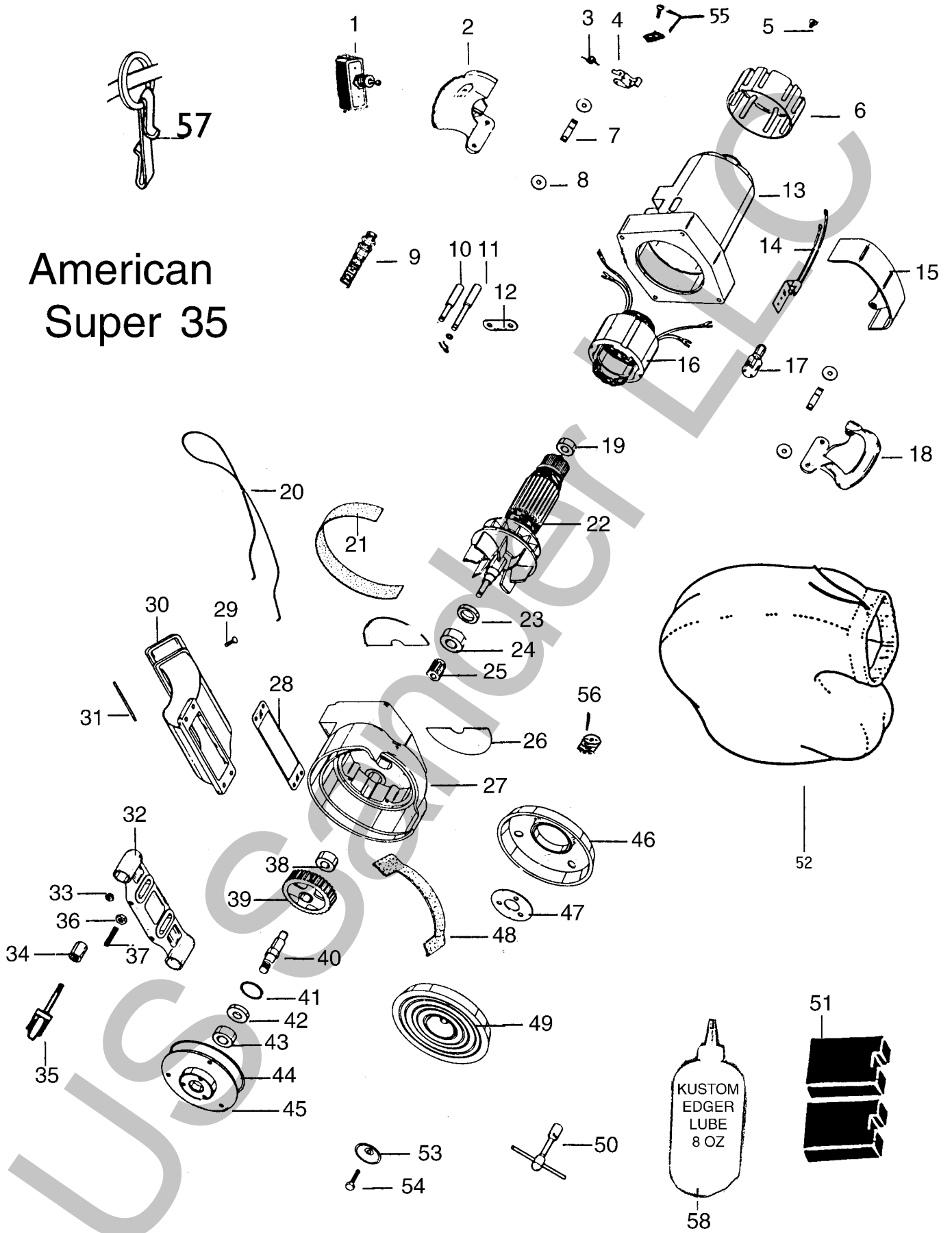


American Super 35



ILL. #	PART #	Description
1	K508	LD Edger Sw
2	AE39	RS Handle
3	AE27	Brush Spring
4	AE28	Brush Holder
5	AE30	Cover Screw
6	AE09	Motor Hous Cap
7	AE03	Wrench Clip
8	AE22	Gasket
9	AE61	Cord Relief
10	AE58	Short Swivel
11	AE57	Long Swivel
12	AE42	Insulator
13	*****	
14	AE23	Light Socket
15	AE25	Light Cover
16	*****	
17	E13	115V Bulb
18	AE40	LS Handle
19	6201	Bearing
20	AE31	Dust Bag Support
21	*****	
22	*****	
23	AE18	Armature Seal
24	6203	Bearing
25	AE45	Pinion Gear
26	AE35	Set 2 Baffles
27	*****	
28	AE21	Dust Gasket
29	AE46	Screw

ILL. #	PART #	Description
30	AE47	Discharge Pipe
31	AE32	Support Bar
32	AE07	Caster Bracket
33	AE36	Stop Nut
34	AE06	Caster Bearing
35	AE05	Caster
36	*****	
37	AE38	Nut & Screw
38	87502	Bearing
39	AE54	B2 Lg gear
40	AE16	Jack Shaft
41	AE55	Retainer Ring
42	AE19	Seal
43	6203	Bearing
44	AE29	Gasket
45	AE33	Gear Cover
46	AE02	Roller Guard
47	AE24	Retainer
48	AE53	Felt Gasket
49	AE01	Edger Pad
50	AE14	Edger wrench
51	AE08	Brushes Set 2
52	E15A	Red Edger Bag
53	E12	Paper Washer
54	AE11	Paper Screw
55	AE59	Brush Clamp
56	AE15	Grease Plug
57	AE60	Clip & Ring
58	KEL1	Edger Lube

OUR EDGER LUBE IS THE BEST!

KEL1



We make it *Thin* enough to run back onto the gears but thick enough so it does not leak by the seals. I have a secret formula with TEFLON added. Comes in squeeze bottles with nozzle!

Note: Prices may vary from actual cost due to computer rounding or typographical errors. Prices may vary at any time.